

Comparison Guide

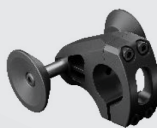


SMOOV
6mph Version



SmartDrive
MX2+

Maximum speed	6.0 mph*	5.5 mph
Maximum user weight	310 lbs. Max weight user + chair/accessories 374 lbs.	330 lbs. Max weight user + chair/accessories 350 lbs.
Operating radius	Up to 12.3 Miles*	Up to 12.3 Miles
Battery	Lithium Ion	Lithium Ion
Drive unit weight	16.0 lbs.	12.5 lbs.
Engine power (watt)	250 W (Peak motor wattage - 450 W)	250 W (Peak motor wattage - NA)
Maximum incline	Up to 16%	Up to 10%
Driving wheel	Pivotable 1 rubber coated wheel Speed reductions in turns Rotating drive wheel provides power in all directions for excellent driving performance	2 rubber wheels
Operation	Detachable Drive Unit easily mounts to the chair for access anytime Allows for speeding up, slowing down, and stopping	Bluetooth Watch Start by tapping 2X Maintain speed after tapping 1X Brake by tapping 2X and grabbing handrims
Attaching to a fixed frame chair	Clamped on axle tube Material: Aluminum Locking claw on the drive unit clicks in to the bracket	Clamped on axle tube Material: Plastic Rests on top of the bracket - does not click in
Attaching to a folding frame chair	Additional adapter shaft required Locking claw on the drive unit clicks in to the adapter shaft	Additional shaft is fixed on the SmartDrive unit making it bulky and difficult to travel with and handle
Adjustable driving characteristics?	Yes, via app	Yes, via app
Warranty	2 years	2 years



SOURCE: SMART DRIVE WEBSITE https://permobilus.com/wp-content/uploads/2018/08/SmartDrive-MX2_Brochure_4pg_Print-Rev0418.pdf 10.22.2020

*Varies based on the weight of the user, temperature, and terrain.



SMOOV

Specifically for the SMOOV

Driving Unit

- **Rotating castor**
Provides power into the turn for optimal performance.
- **Turn sensor; automatically reduces speed during turns.**
- **USB-C power connection to charge the control unit or your cell phone.**



- **Aluminum carrying handle**
Easy to add and remove the SMOOV to the chair.
Locking claw securely attaches the SMOOV to the chair.
The handle also unlocks/locks the SMOOV
- **Rubber tire**
Works indoors & outdoors. No openings for dirt.
- **Integrated tail light**

Operating Unit

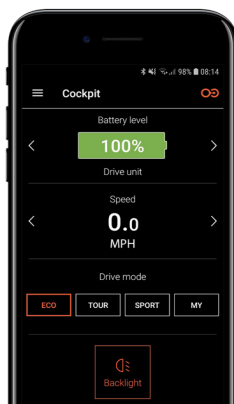
- **Power, Control Unit & performance at your fingertips.**
- **Speed up, slow down and stop with ease.**
- **Also, reduce the speed while driving.**
Easily anticipate your environment. It also takes less force to come to a stop.



- **Two ways to stop the Drive Unit**
 1. Turn the dial back until the SMOOV stops (slowing down). Grab the hand rims to fully stop momentum.
 2. Quick stop. Tap the control unit, which stops the drive unit, grab the hand rims to fully stop momentum.

SMOOV one app

- **Chose your ride. Eco, Tour, Sport, My Mode**
- **Adjust starting speed & acceleration**
- **Adjust torque**
Adjust the speed increase from every click of the control unit from .1 to .6 mph
- See remaining battery life of the control unit and the drive unit.
- See error messages.



Upgrade the app to make your ride easier with easyNavi. The app's paid navigation feature provides you with the most wheelchair-friendly route to your destination

Advantages of the SMOOV one

- The locking claw secures the unit to the chair... no pop offs
- Aluminum axle tube clamp
- Control unit is attached to the chair, so it's ready when you need it. No watch needed.
- Speed is easily adjustable while driving
- Integrated LED light
- Charge your cell phone from the drive unit
- Dynamic driving performance. Drive unit powers into and with the turn